

# Exclusive photoproduction of $J/\psi$ in $pp$ and $p\bar{p}$ collisions

Wolfgang Schäfer <sup>1</sup>

<sup>1</sup>Institute of Nuclear Physics, PAN, Kraków

MESON 2008, 6-10 June 2008, Kraków, Poland

## Exclusive production of heavy vector mesons

### Results for $J/\psi$

### Summary



W.S. & Antoni Szczurek

Exclusive Photoproduction of  $J/\psi$  in proton–proton and proton–antiproton scattering.

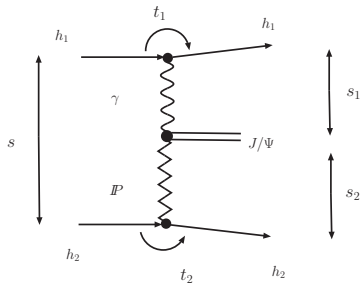
*Phys. Rev. D 76:094014, 2007*

and ongoing work with Anna Rybarska and Antoni Szczurek.

# Exclusive Production of $J/\psi$ in Hadronic Collisions

## Born Level Amplitudes

### Photoproduction



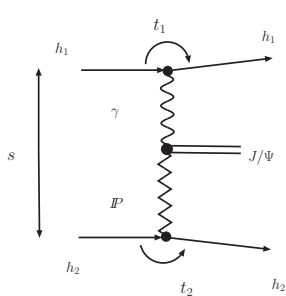
Khoze-Martin-Ryskin '02; Klein & Nystrand '04

cross section  $\sim$  nanobarns

# Exclusive Production of $J/\psi$ in Hadronic Collisions

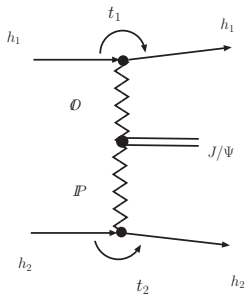
## Born Level Amplitudes

Photoproduction



Khoze-Martin-Ryskin '02; Klein & Nystrand '04  
cross section  $\sim$  nanobarns

Odderon-Pomeron fusion

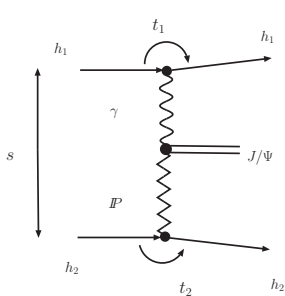


A. Schäfer, Mankiewicz & Nachtmann '91; Bzdak et al. '07  
cross section  $\sim 0.1 \div$  few nanobarns (??)

# Exclusive Production of $J/\psi$ in Hadronic Collisions

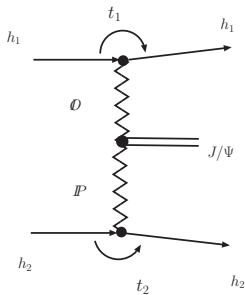
## Born Level Amplitudes

### Photoproduction



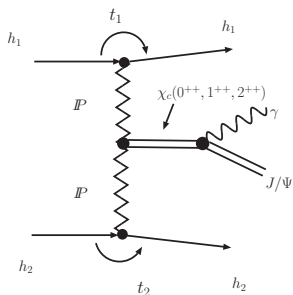
Khoze-Martin-Ryskin '02; Klein & Nystrand '04  
cross section  $\sim$  nanobarns

### Odderon-Pomeron fusion



A. Schäfer, Mankiewicz & Nachtmann '91; Bzdak et al. '07  
cross section  $\sim 0.1 \div$  few nanobarns (??)

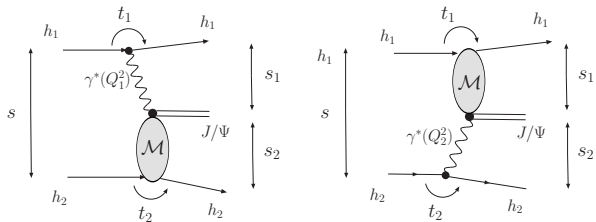
### Radiative Decay of $\chi_c$



e.g. Szczurek, Pasechnik & Teryaev '07 find  $< 1$  nb.

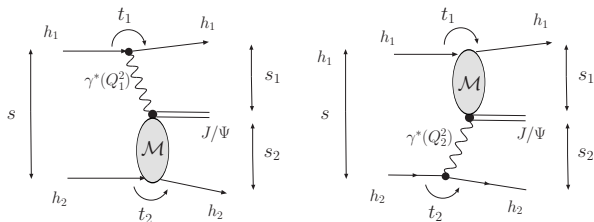
# Exclusive Photoproduction in Hadronic Collisions

## Born Level Amplitude



# Exclusive Photoproduction in Hadronic Collisions

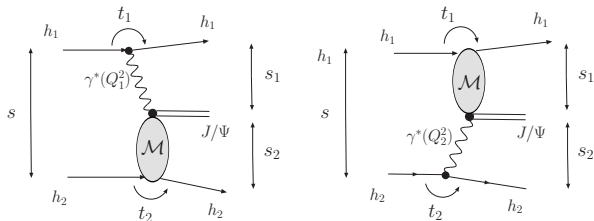
## Born Level Amplitude



- $p \rightarrow \gamma p$  transition given in terms of e.m. formfactors.

# Exclusive Photoproduction in Hadronic Collisions

## Born Level Amplitude

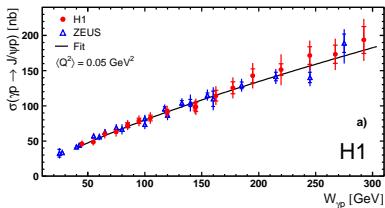


- $p \rightarrow \gamma p$  transition given in terms of e.m. formfactors.
- $\gamma p \rightarrow J/\psi p$  amplitude adjusted to HERA data.

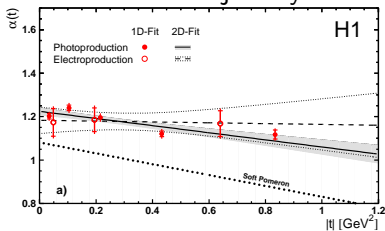
$$\mathcal{M} = (i + \rho) s \sqrt{16\pi d\sigma/dt|_{t=0}} (s/s_0)^{\alpha(t)-1} \exp(B_0 t/2).$$



# HERA data determine the amplitude

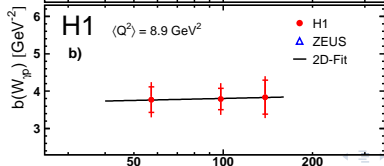
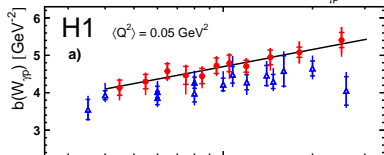
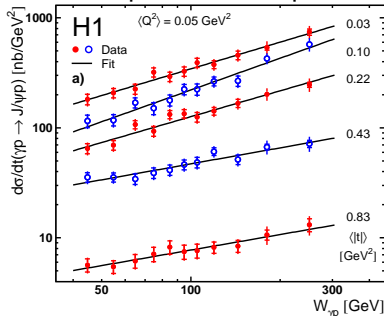


Pomeron trajectory :



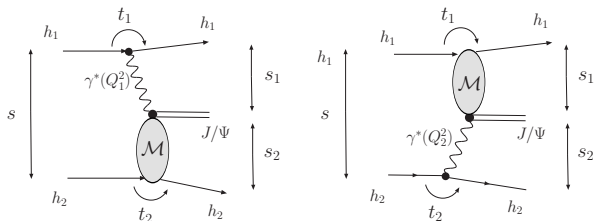
from H1 Collab. (A. Aktas et al.,  
Eur. Phys. J. C46, 2006)

$t$ -dependence, slope :



# Exclusive Photoproduction in Hadronic Collisions

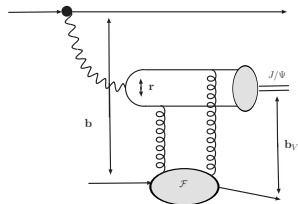
## Born Level Amplitude



$$\begin{aligned} M(\mathbf{p}_1, \mathbf{p}_2) &= e_1 \frac{2}{z_1} \frac{\mathbf{p}_1}{t_1} \mathcal{F}_{\lambda'_1 \lambda_1}(\mathbf{p}_1, t_1) \mathcal{M}_{\gamma^* h_2 \rightarrow \psi h_2}(s_2, t_2, Q_1^2) \\ &+ e_2 \frac{2}{z_2} \frac{\mathbf{p}_2}{t_2} \mathcal{F}_{\lambda'_2 \lambda_2}(\mathbf{p}_2, t_2) \mathcal{M}_{\gamma^* h_1 \rightarrow \psi h_1}(s_1, t_1, Q_2^2). \end{aligned}$$

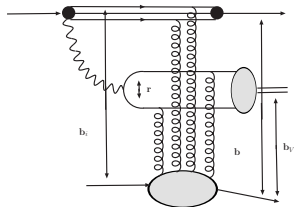
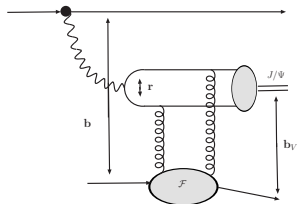
- $\mathbf{p}_1, \mathbf{p}_2$  = transverse momenta of outgoing (anti-) protons.
- Interference induces **azimuthal correlation**  $e_1 e_2 (\mathbf{p}_1 \cdot \mathbf{p}_2)$ .

# Absorptive Corrections



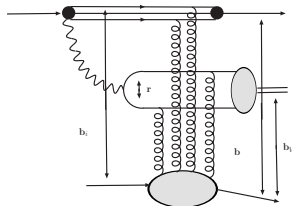
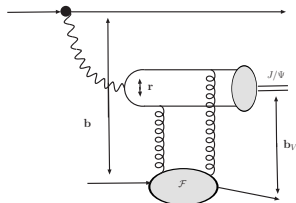
- Born:  $\Gamma^{(0)}(\mathbf{r}, \mathbf{b}_V) = \frac{1}{2} \sigma(\mathbf{r}) t_N(\mathbf{b}_V)$

# Absorptive Corrections



- Born:  $\Gamma^{(0)}(\mathbf{r}, \mathbf{b}_V) = \frac{1}{2} \sigma(\mathbf{r}) t_N(\mathbf{b}_V)$

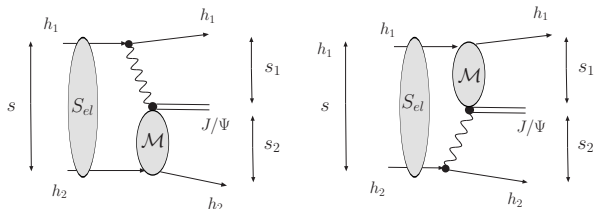
# Absorptive Corrections



- Born:  $\Gamma^{(0)}(\mathbf{r}, \mathbf{b}_V) = \frac{1}{2} \sigma(\mathbf{r}) t_N(\mathbf{b}_V)$
- Absorbed:

$$\begin{aligned}
 \Gamma(\mathbf{r}, \mathbf{b}_V, \mathbf{b}) &= \Gamma^{(0)}(\mathbf{r}, \mathbf{b}_V) - \frac{1}{4} \sigma(\mathbf{r}) \sigma_{qqq}(\{\mathbf{b}_i\}) t_N(\mathbf{b}_V) t_N(\mathbf{b}) \\
 &= \Gamma^{(0)}(\mathbf{r}, \mathbf{b}_V) \left( 1 - \frac{1}{2} \sigma_{qqq}(\{\mathbf{b}_i\}) t_N(\mathbf{b}) \right) \\
 &\rightarrow \Gamma^{(0)}(\mathbf{r}, \mathbf{b}_V) \cdot S_{el}(\mathbf{b})
 \end{aligned}$$

# Absorptive Corrections



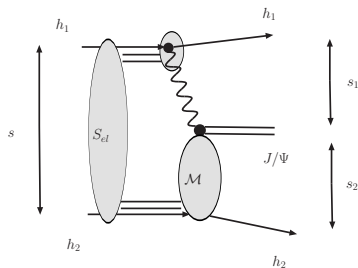
$$\begin{aligned}
 \mathbf{M}(\mathbf{p}_1, \mathbf{p}_2) &= \int \frac{d^2 \mathbf{k}}{(2\pi)^2} S_{el}(\mathbf{k}) \mathbf{M}^{(0)}(\mathbf{p}_1 - \mathbf{k}, \mathbf{p}_2 + \mathbf{k}) \\
 &= \mathbf{M}^{(0)}(\mathbf{p}_1, \mathbf{p}_2) - \delta \mathbf{M}(\mathbf{p}_1, \mathbf{p}_2),
 \end{aligned}$$

with

$$S_{el}(\mathbf{k}) = (2\pi)^2 \delta^{(2)}(\mathbf{k}) - \frac{1}{2} T(\mathbf{k}), \quad T(\mathbf{k}) = \sigma_{tot}^{pp}(s) \exp\left(-\frac{1}{2} B_{el} \mathbf{k}^2\right),$$

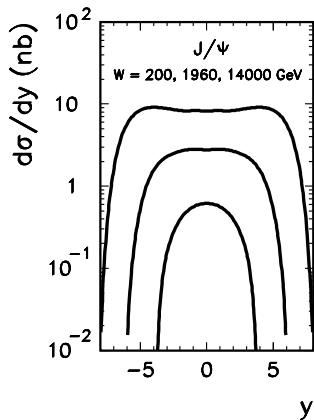
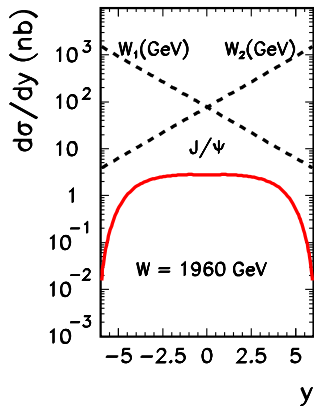
$$\delta \mathbf{M}(\mathbf{p}_1, \mathbf{p}_2) = \int \frac{d^2 \mathbf{k}}{2(2\pi)^2} T(\mathbf{k}) \mathbf{M}^{(0)}(\mathbf{p}_1 - \mathbf{k}, \mathbf{p}_2 + \mathbf{k})$$

# Absorptive Corrections



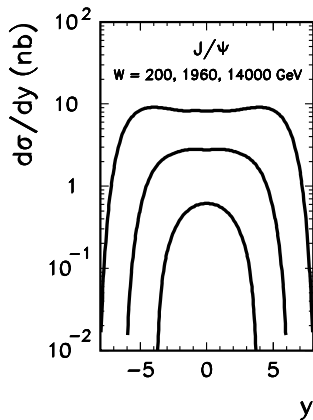
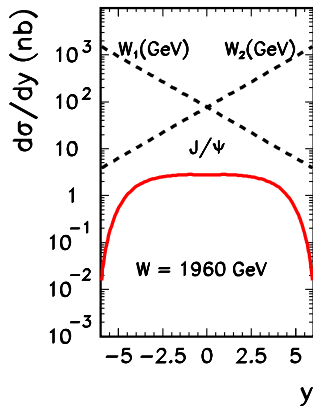
- A poor man's recipe to account for other than elastic rescatterings:
- multiply rescattering amplitude by  $\lambda \sim (\sigma_{el} + \sigma_D)/\sigma_{el}$
- $\sigma_D = 2\sigma(pp \rightarrow pX) + \sigma(pp \rightarrow XY)$ .

# Rapidity Distribution



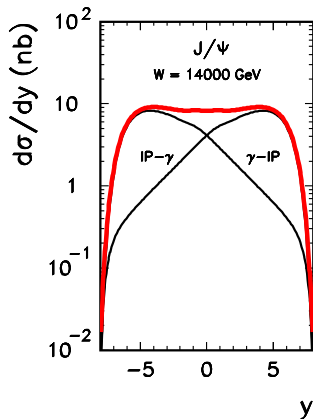
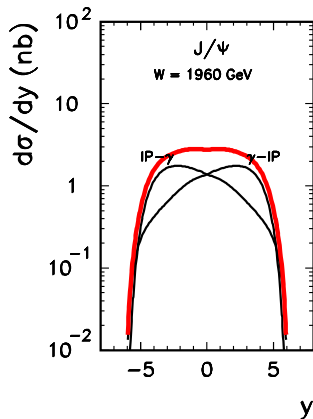


# Rapidity Distribution



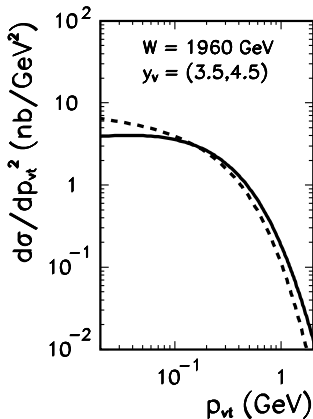
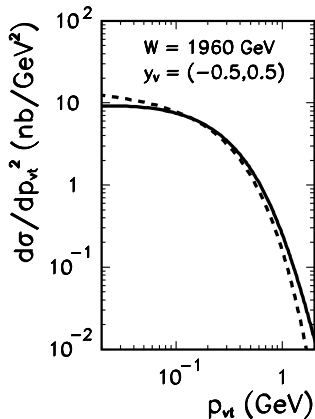
- sizeable cross sections, energy reach **beyond the HERA regime**

# Rapidity Distribution



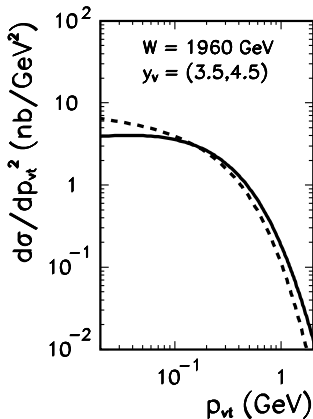
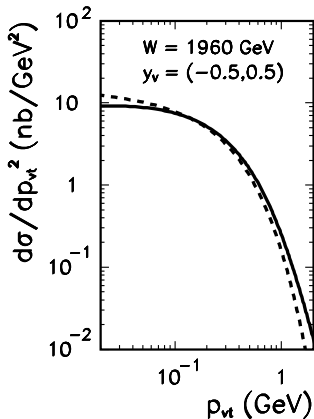
- No Absorption included  $\rightarrow$  Interference cancels out.
- Separation of the two mechanisms:  **$P$  propagates the larger distance in rapidity.**

# Transverse Momentum Distribution of $J/\psi$ 's



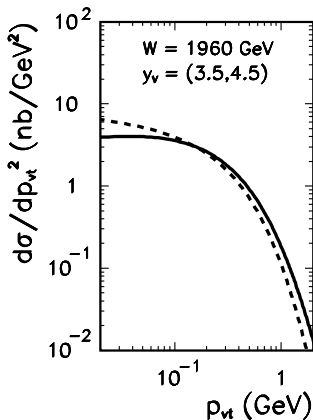
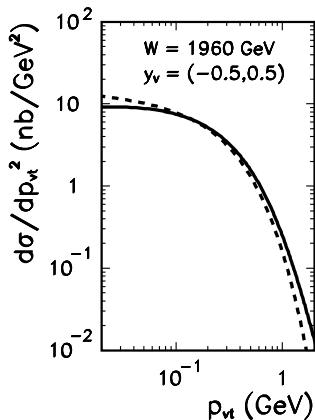
- Solid lines  $\leftrightarrow$   $pp$  collisions. Dashed lines  $\leftrightarrow$   $p\bar{p}$  collisions.

# Transverse Momentum Distribution of $J/\psi$ 's



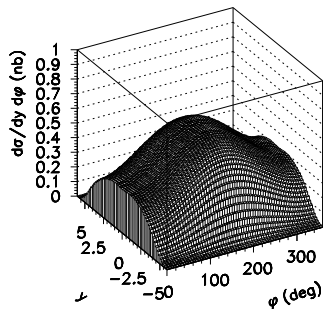
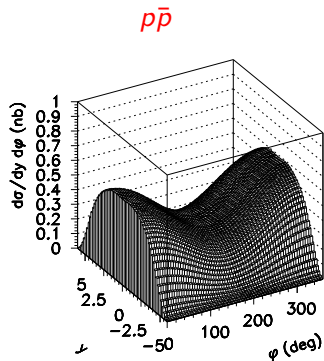
- Solid lines  $\leftrightarrow$   $pp$  collisions. Dashed lines  $\leftrightarrow$   $p\bar{p}$  collisions.
- $J/\psi$ 's are produced with very small  $p_{\perp}$ .

# Transverse Momentum Distribution of $J/\psi$ 's



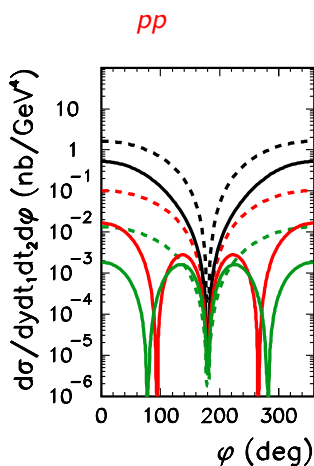
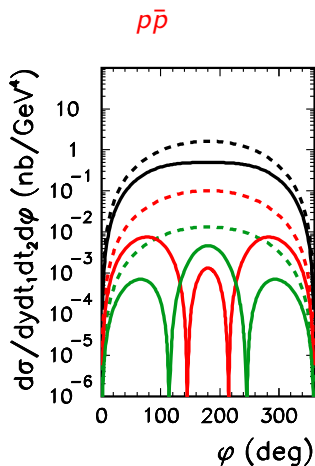
- Solid lines  $\leftrightarrow$   $pp$  collisions. Dashed lines  $\leftrightarrow$   $p\bar{p}$  collisions.
- $J/\psi$ 's are produced with very small  $\mathbf{p}_{\perp}$ .
- Interference of  $\gamma\mathbf{P}$  and  $\mathbf{P}\gamma \rightarrow$  different shapes in  $pp$  and  $p\bar{p}$ .

# Azimuthal Angle Between Outgoing (Anti-)Protons



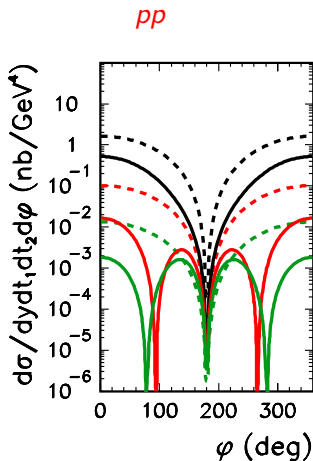
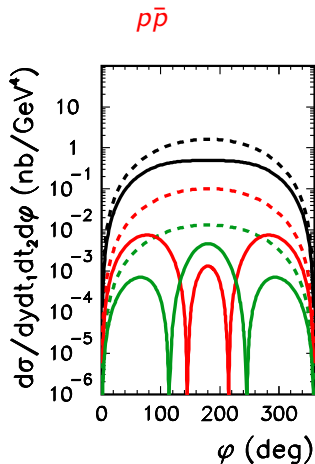
- Interference of  $\gamma P$  and  $P\gamma$  induces dependence on azimuth.
- It works in a broad range of rapidities.

# Azimuthal Angle Between Outgoing (Anti-)Protons



- Dashed Lines → Born Level. Solid Lines: Absorption included.

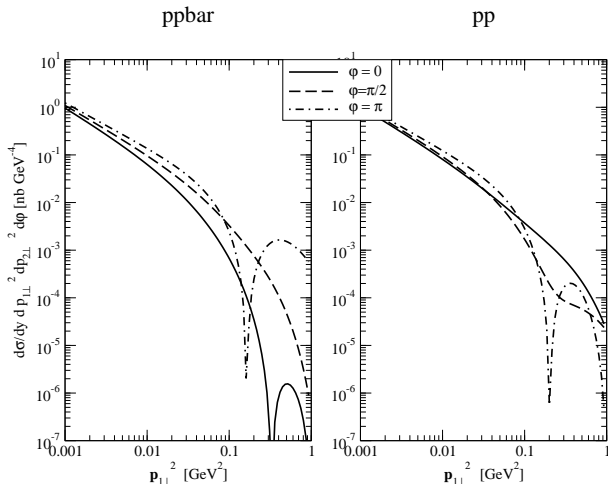
# Azimuthal Angle Between Outgoing (Anti-)Protons



- Dashed Lines → Born Level. Solid Lines: Absorption included.
- Absorption induces a rich structure of “diffractive dips”.

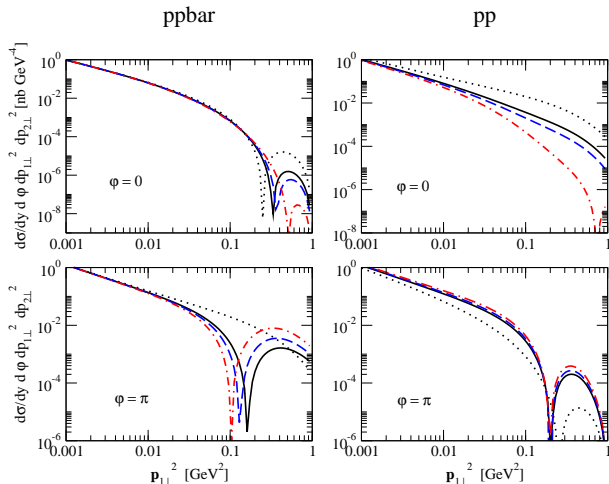


# Fully Differential Cross Section



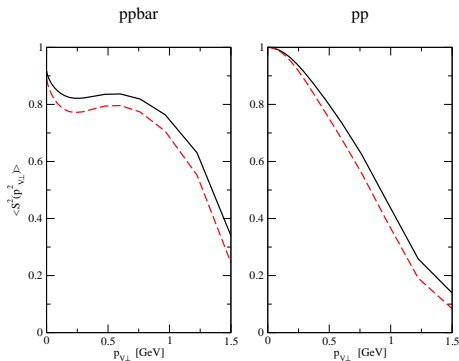
- $y = 0$ ;  $p_2^2 = 1$  GeV<sup>2</sup>. Absorptive corrections included.

# Varying the Strength of Absorption



- $y = 0$ ;  $p_2^2 = 1 \text{ GeV}^2$ . Dotted: Born level.
- solid: elastic rescattering; dashed/dash-dotted: enhanced rescattering.

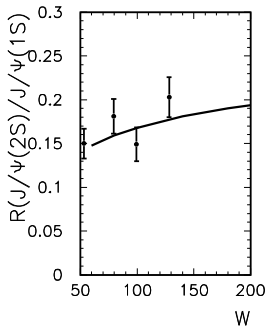
# $p_{\perp}$ -dependence of Absorption $\langle S^2(p_{\perp}) \rangle$ , $y=0$



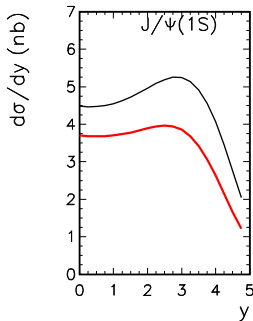
- Solid: elastic rescattering, Dashed: enhanced rescattering  $\lambda = 1.5$ .
- Absorptive Suppression is a strong function of  $\mathbf{p}_{J/\psi}$ .
- Absorption leads to a small 2 ÷ 3% charge asymmetry in rapidity distributions.

# Radial excitation: $\Psi(2S)$ vs $J/\psi(1S)$

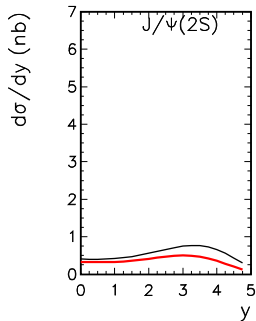
HERA(H1, 2002)



Tevatron



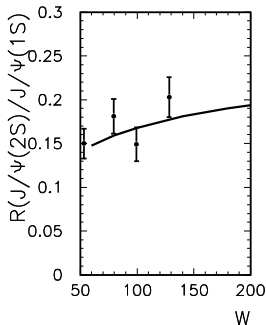
Tevatron



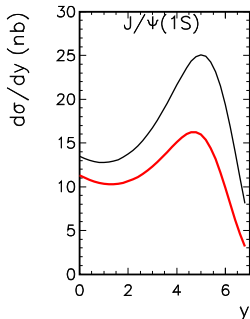
- Predictions from pQCD modelling of  $P$  (see A. Rybarska talk).
- Suppression of  $\Psi(2S)$  due to the node in the radial WF.
- black: without absorption, red: with absorption

# Radial excitation: $\Psi(2S)$ vs $J/\psi(1S)$

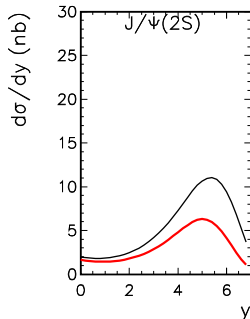
HERA(H1, 2002)



LHC



LHC



- Predictions from pQCD modelling of  $P$  (see A. Rybarska talk).
- Suppression of  $\Psi(2S)$  due to the node in the radial WF.
- black: without absorption, red: with absorption

# Summary

- Cross sections for exclusive photoproduction of Quarkonia at colliders are of measurable size.
- Reach in energy far beyond HERA-domain possible.
- Absorptive corrections: rich structure in distributions.
  
- Outlook
  - For  $\Upsilon(1S, 2S)$  see the talk by A. Rybarska, Monday Session #2B, 16 : 00.
  - Absorptive corrections at LHC energies remain a challenge.
  - Include other 'backgrounds', feeddown from  $p$ -waves, Odderon.
  - Extension to nucleus–nucleus collisions.  $\rightarrow$  the small- $x$  gluon distribution in nuclei.